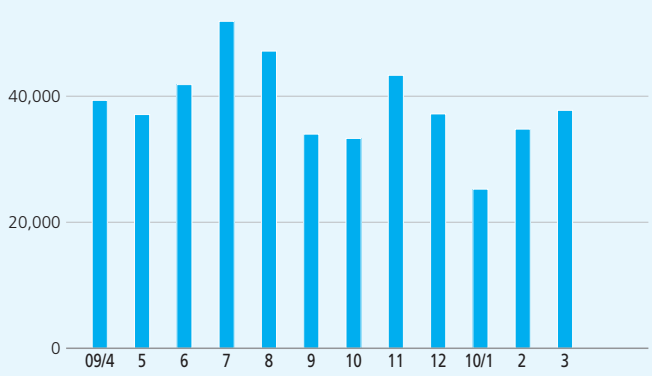
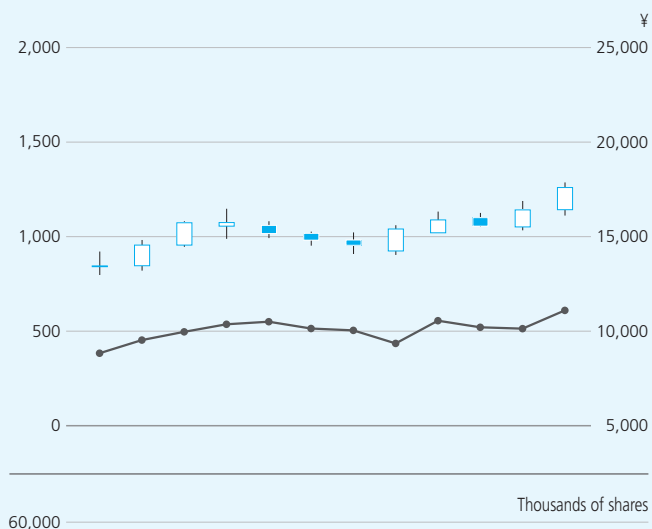


INVESTOR INFORMATION

KURARAY CO., LTD.

Established:	June 24, 1926
Capital:	¥88,955 million
Shares Authorized:	1,000,000,000 shares
Issued:	382,863,603 shares
Number of Shareholders:	25,369
Head Offices:	Tokyo, Osaka

Share Price Movement



Share prices according to the market price on the Tokyo Stock Exchange

High Closing High Opening
 Low Opening Low Closing
 — Nikkei Stock Average (right scale) ■ Volume

Shareholder Register Agent for Common Stock

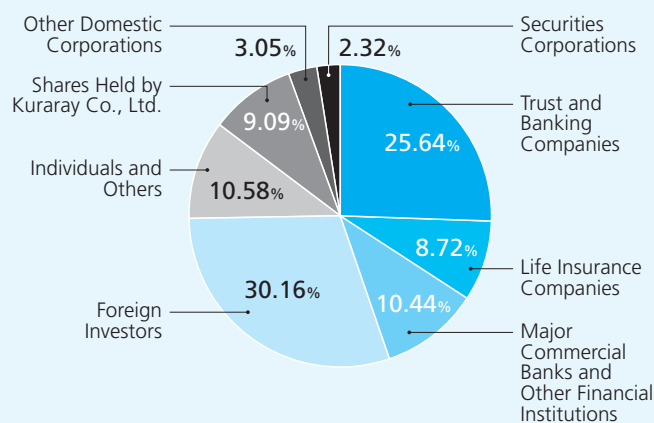
The Sumitomo Trust and Banking Co., Ltd.
 4-5-33, Kitahama, Chuo-Ku, Osaka 540-8639, Japan

Principal Shareholders

Name or company name	Number of Shares Held (thousands)	Percentage of Shares Held
Japan Trustee Services Bank, Ltd. (Trust Account)	31,415	9.03%
The Master Trust Bank of Japan, Ltd. (Trust Account)	27,598	7.93%
National Mutual Insurance Federation of Agricultural Co-operatives	13,695	3.94%
Nippon Life Insurance Company	13,061	3.75%
Meiji Yasuda Life Insurance Company	6,453	1.85%
Japan Trustee Services Bank, Ltd. (Trust Account 9)	6,415	1.84%
The Dai-ichi Mutual Life Insurance Company	5,352	1.54%
MELLON BANK TREATY CLIENTS OMNIBUS	4,639	1.33%
Mitsui Sumitomo Insurance Company, Limited	4,500	1.29%
SSBT OD05 OMNIBUS ACCOUNT CHINA TREATY CLIENTS	3,982	1.14%

Notes: 1. Although the Company owns 34,790,071 shares of treasury stock, it is excluded from the major shareholders listed above. In calculation of the percentage of shares held, the treasury shares of the Company are excluded from the total number of shares issued.
 2. The Dai-ichi Mutual Life Insurance Company reorganized from a mutual life insurance company to a joint stock corporation as of April 1, 2010, and changed its name to The Dai-ichi Life Insurance Company.

Breakdown of Issued Shares by Type



(As of March 31, 2010)