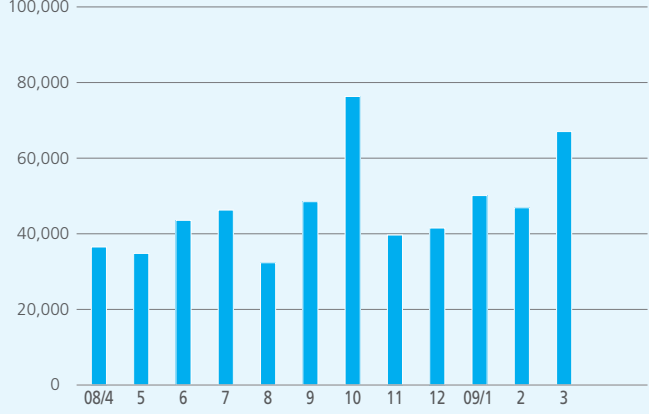
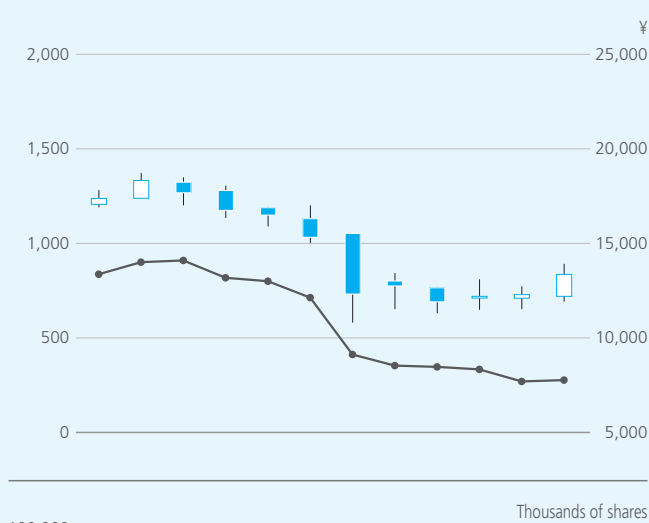


Investor Information

KURARAY CO., LTD.

Established:	June 24, 1926
Capital:	¥88,955 million
Shares Authorized:	1,000,000,000 shares
Issued:	382,863,603 shares
Number of Shareholders:	28,516
Head Offices:	Tokyo, Osaka

Share Price Movement



Share prices according to the market price on the Tokyo Stock Exchange

High Closing, High Opening, Low Closing, Low Opening, Nikkei Stock Average (right scale), Volume

Shareholder Register Agent for Common Stock

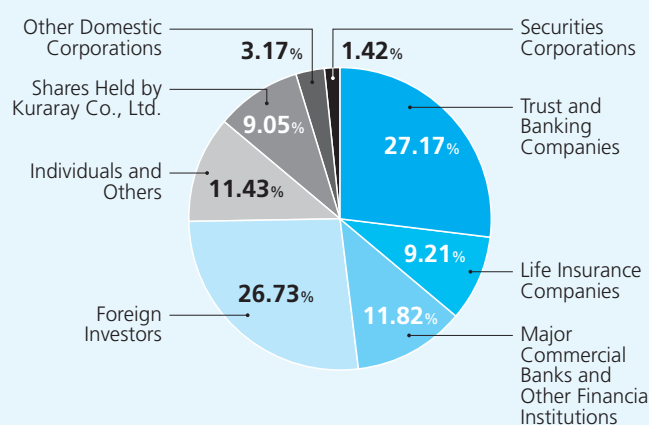
The Sumitomo Trust and Banking Co., Ltd.
4-5-33, Kitahama, Chuo-Ku, Osaka 540-8639, Japan

Principal Shareholders

Name or company name	Number of Shares Held (thousands)	Percentage of Shares Held
Japan Trustee Services Bank, Ltd. (Trust Account)	35,438	9.26%
The Master Trust Bank of Japan, Ltd. (Trust Account)	27,153	7.09%
Japan Trustee Services Bank, Ltd. (Trust Account)	17,956	4.69%
National Mutual Insurance Federation of Agricultural Cooperatives	13,695	3.58%
Nippon Life Insurance Company	13,061	3.41%
Meiji Yasuda Life Insurance Company	8,066	2.11%
Trust & Custody Services Bank, Ltd. (Securities Investment Trust Account)	7,303	1.91%
The Dai-ichi Mutual Life Insurance Company	5,352	1.40%
STATE STREET BANK AND TRUST COMPANY 505225	5,128	1.34%
BNP Paribas Securities (Japan) Ltd.	4,750	1.24%

Note: Kuraray Co., Ltd holds 34,647,544 shares of treasury stock.

Breakdown of Issued Shares by Type



(As of March 31, 2009)